
sphinxcontrib-mermaid documentation

Martín Gaitán

May 28, 2023

MORE EXAMPLES:

1	Installation	7
2	Directive options	9
3	Config values	11
4	Markdown support	13
5	Building PDFs on readthedocs.io	15
5.1	Diagrams with zoom	17
6	Indices and tables	19



This extension allows you to embed [Mermaid](#) graphs in your documents, including general flowcharts, sequence diagrams, gantt diagrams and more.

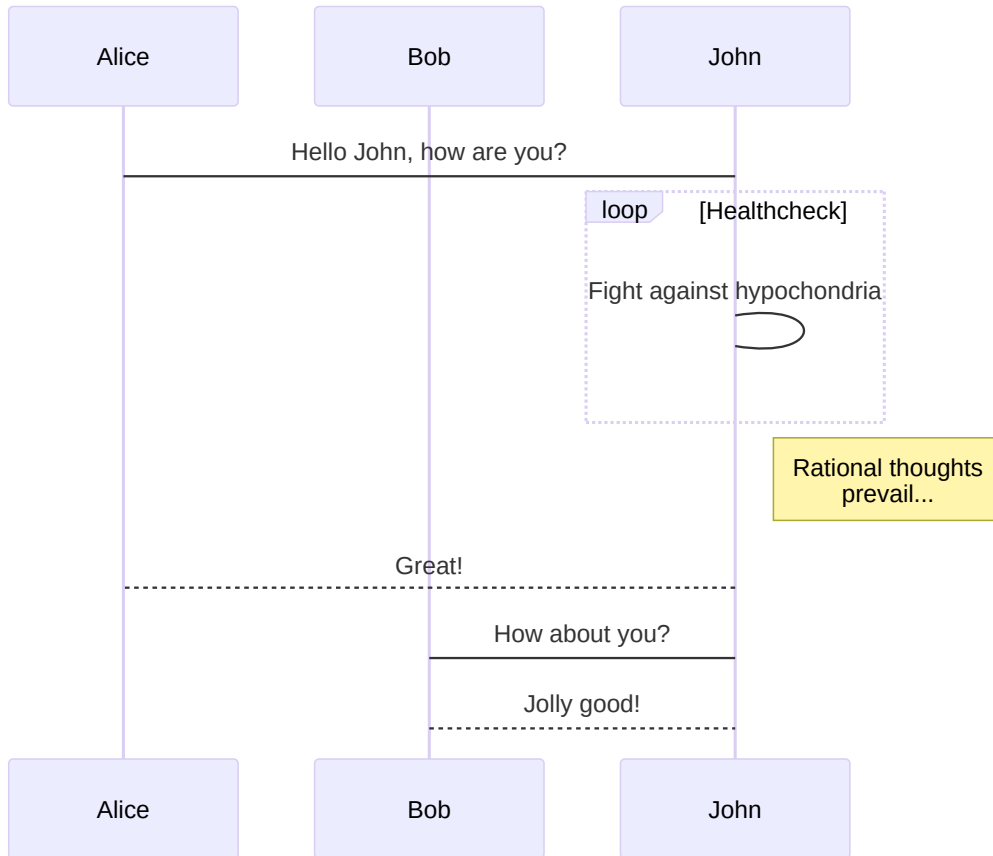
It adds a directive to embed mermaid markup. For example:

```
.. mermaid::

sequenceDiagram
    participant Alice
    participant Bob
    Alice->>John: Hello John, how are you?
    loop Healthcheck
        John->>John: Fight against hypochondria
    end
    Note right of John: Rational thoughts <br/>prevail...
    John-->>Alice: Great!
    John->>Bob: How about you?
    Bob-->>John: Jolly good!
```

By default, the HTML builder will simply render this as a div tag with `class="mermaid"`, injecting the external javascript, css and initialization code to make mermaid works.

For other builders (or if `mermaid_output_format` config variable is set differently), the extension will use [mermaid-cli](#) to render as to a PNG or SVG image, and then used in the proper code.



You can also embed external mermaid files, by giving the file name as an argument to the directive and no additional content:

```
.. mermaid:: path/to/mermaid-gantt-code.mmd
```

As for all file references in Sphinx, if the filename is not absolute, it is taken as relative to the source directory.

In addition, you can use mermaid to automatically generate a diagram to show the class inheritance using the directive `autoclasstree`. It accepts one or more fully qualified names to a class or a module. In the case of a module, all the class found will be included.

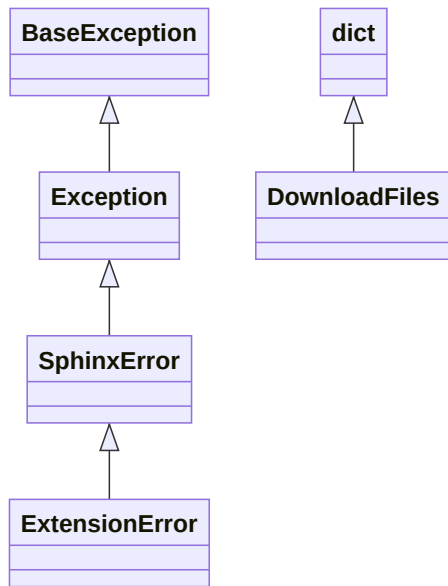
Of course, these objects need to be importable to make its diagram.

If an optional attribute `:full:` is given, it will show the complete hierarchy of each class.

The option `:namespace: <value>` limits to the base classes that belongs to this namespace. Meanwhile, the flag `:strict:` only process the classes that are strictly defined in the given module (ignoring classes imported from other modules).

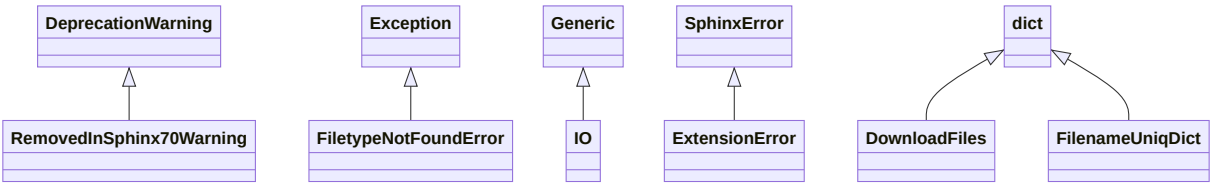
For example:

```
.. autoclasstree:: sphinx.util.DownloadFiles sphinx.util.ExtensionError
   :full:
```



Or directly the module:


```
.. autoclasstree:: sphinx.util
```



INSTALLATION

You can install it using pip

```
pip install sphinxcontrib-mermaid
```

Then add `sphinxcontrib.mermaid` in extensions list of your project's `conf.py`:

```
extensions = [  
    ...,  
    'sphinxcontrib.mermaid'  
]
```


DIRECTIVE OPTIONS

`:alt::` determines the image's alternate text for HTML output. If not given, the alternate text defaults to the mermaid code.

`:align::` determines the image's position. Valid options are 'left', 'center', 'right'

`:caption::` can be used to give a caption to the diagram.

`:zoom::` can be used to enable zooming the diagram. For a global config see `mermaid_d3_zoom`` below.

sphinxcontrib-mermaid

Navigation

Quick search

Go

Welcome to Sphinxcontrib-mermaid demo's documentation!

Test passing

This extension allows you to embed [Mermaid](#) graphs in your documents, including general flowcharts, sequence and gantt diagrams.

It adds a directive to embed mermaid markup. For example:

```
.. mermaid::
sequenceDiagram
    participant Alice
    participant Bob
    Alice->>John: Hello John, how are you?
    loop Healthcheck
        John->>John: Fight against hypochondria
    end
    Note right of John: Rational thoughts <br/>prevail...
    John-->>Alice: Great!
    John->>Bob: How about you?
    Bob-->>John: Jolly good!
```

By default, the HTML builder will simply render this as a `div` tag with `class="mermaid"`,

Fig. 1: A preview after adding `:zoom:` option only to the first diagram example above:

CONFIG VALUES

`mermaid_output_format`

The output format for Mermaid when building HTML files. This must be either `'raw'`, `'png'` or `'svg'`; the default is `'raw'`. `mermaid-cli` is required if it's not `raw`

`mermaid_version`

The version of mermaid that will be used to parse raw output in HTML files. This should match a version available on <https://unpkg.com/browse/mermaid/>. The default is `"10.2.0"`. If you need a newer version, you'll need to add the custom initialization. See below.

If it's set to `""`, the lib won't be automatically included from the CDN service and you'll need to add it as a local file in `html_js_files`. For instance, if you download the lib to `_static/js/mermaid.js`, in `conf.py`:

```
html_js_files = [  
    'js/mermaid.js',  
]
```

`mermaid_init_js`

Mermaid initialization code. Default to `"mermaid.initialize({startOnLoad:true});"`.

Changed in version 0.7: The init code doesn't include the `<script>` tag anymore. It's automatically added at build time.

`mermaid_cmd`

The command name with which to invoke `mermaid-cli` program. The default is `'mmdc'`; you may need to set this to a full path if it's not in the executable search path.

`mermaid_cmd_shell`

When set to `true`, the `shell=True` argument will be passed the process execution command. This allows commands other than binary executables to be executed on Windows. The default is `false`.

`mermaid_params`

For individual parameters, a list of parameters can be added. Refer to <https://github.com/mermaidjs/mermaid.cli#options>. Examples:

```
mermaid_params = ['--theme', 'forest', '--width', '600', '--backgroundColor',  
    ↪ 'transparent']
```

This will render the mermaid diagram with theme `forest`, 600px width and transparent background.

`mermaid_sequence_config`

Allows overriding the sequence diagram configuration. It could be useful to increase the width between actors. It **needs to be a json file** Check options in the [documentation](#)

`mermaid_verbose`

Use the verbose mode when call mermaid-cli, and show its output in the building process.

`mermaid_pdfcrop`

If using latex output, it might be useful to crop the pdf just to the needed space. For this, `pdfcrop` can be used. State binary name to use this extra function.

`mermaid_d3_zoom`

Enables zooming in all the generated Mermaid diagrams.

MARKDOWN SUPPORT

You can include Mermaid diagrams in your Markdown documents in Sphinx. You just need to setup the [markdown support in Sphinx](#) via [myst-parser](#) . See a [minimal configuration from the tests](#)

Then in your *.md* documents include a code block as in reStructuredTexts:

```
```{mermaid}

sequenceDiagram
 participant Alice
 participant Bob
 Alice->>John: Hello John, how are you?
...`
```



## BUILDING PDFS ON READTHEDOCS.IO

In order to have Mermaid diagrams build properly in PDFs generated on readthedocs.io, you will need a few extra configurations.

1. In your `.readthedocs.yaml` file (which should be in the root of your repository) include a `post-install` command to install the Mermaid CLI:

```
build:
 os: ubuntu-20.04
 tools:
 python: "3.8"
 nodejs: "16"
 jobs:
 post_install:
 - npm install -g @mermaid-js/mermaid-cli
```

Note that if you previously did not have a `.readthedocs.yaml` file, you will also need to specify all targets you wish to build and other basic configuration options. A minimal example of a complete file is:

```
.readthedocs.yaml
Read the Docs configuration file
See https://docs.readthedocs.io/en/stable/config-file/v2.html for details

Required
version: 2

Set the version of Python and other tools you might need
build:
 os: ubuntu-20.04
 tools:
 python: "3.8"
 nodejs: "16"
 jobs:
 post_install:
 - npm install -g @mermaid-js/mermaid-cli

Build documentation in the docs/ directory with Sphinx
sphinx:
 configuration: docs/conf.py

If using Sphinx, optionally build your docs in additional formats such as PDF
formats:
```

(continues on next page)

(continued from previous page)

```
- epub
- pdf

python:
 install:
 - requirements: docs/requirements.txt
```

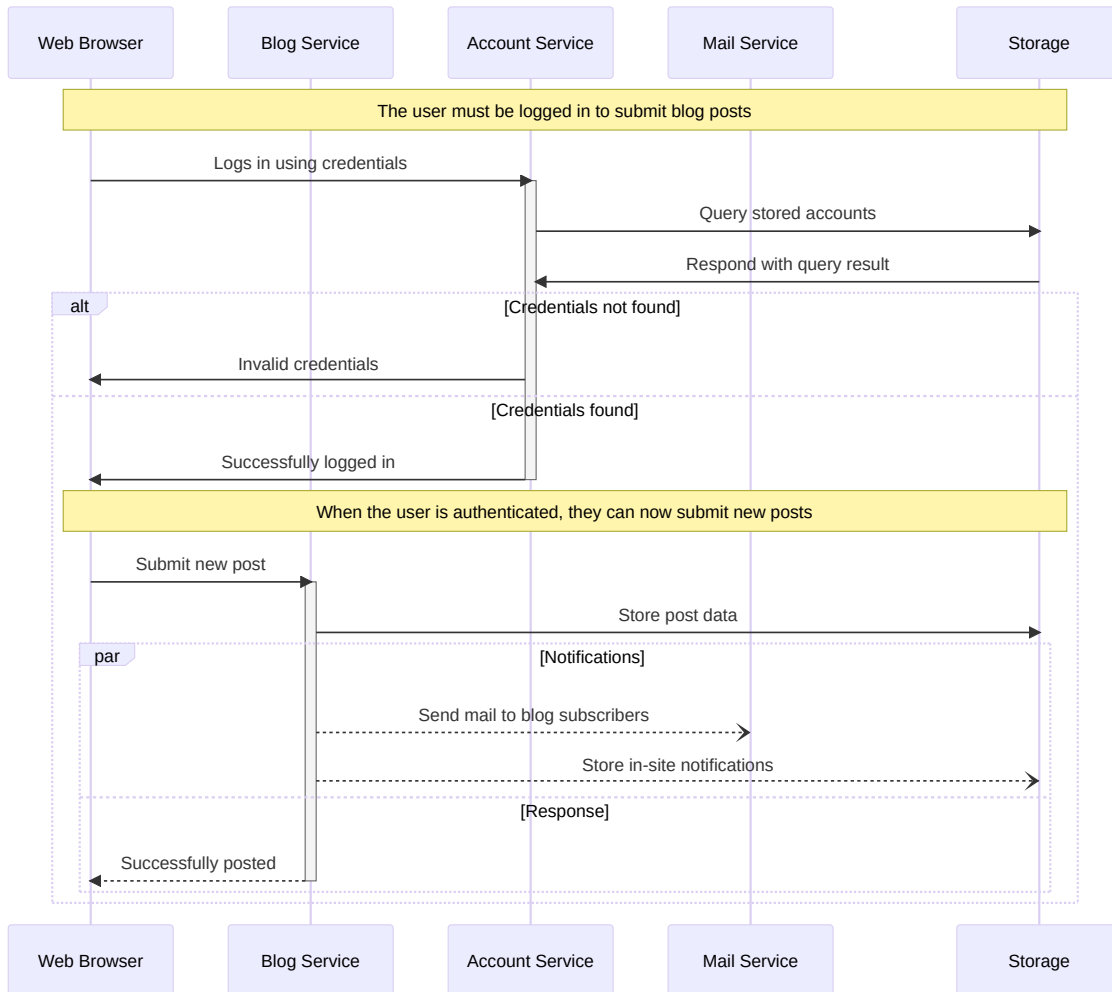
2. In your documentation directory add file `puppeteer-config.json` with contents:

```
{
 "args": ["--no-sandbox"]
}
```

3. In your documentation `conf.py` file, add:

```
mermaid_params = ['-p' 'puppeteer-config.json']
```

## 5.1 Diagrams with zoom





## INDICES AND TABLES

- `genindex`
- `modindex`
- `search`